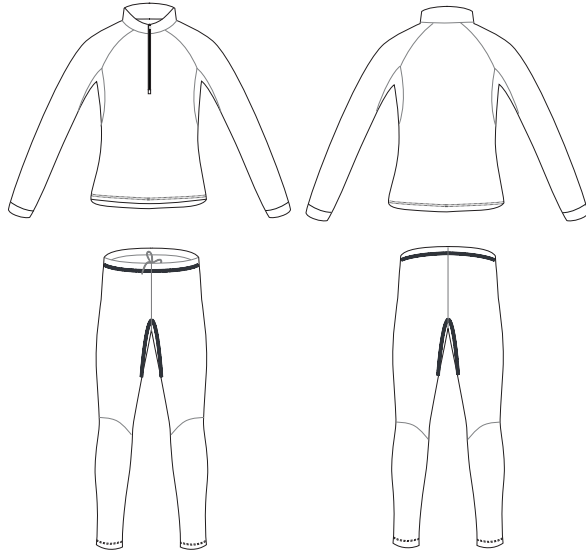


**NI52:** Women Silver Race Suit - Top

**NI53:** Women Silver Race Suit - Bottom



**FABRIC DETAILS :** LILLEHAMMER SILVER

Our Lillehammer Silver fabric is a highly elastic tricot knit that offers superior moisture wicking and ultra fast dry times. Engineered in Europe for elite athletes, this textile allows you to perform at your peak.



**GARMENT DETAILS:**

- Women's Specific Fit
- YKK 7.5" Zipper with Semi-Auto Locking Pull
- Contoured Raglan Sleeve Construction
- Under Arm Gussets for a Superior Fit
- 1.5" Elastic with Drawcord at Waist
- Form Fit
- Fully Customizable

**PRICING:**

\$160

**SIZE CHART : WOMEN'S NORDIC**

	XSMALL	SMALL	MEDIUM	LARGE	XLARGE	2XLARGE
<b>HEIGHT</b>	4'9" - 5'1"	5'2" - 5'4"	5'5" - 5'8"	5'8" - 5'10"	5'9" - 5'11"	5'11" - 5'12"
<b>WEIGHT</b>	90 - 110 lbs	110 - 120 lbs	120-140 lbs	140 - 160 lbs	160 - 180 lbs	180 - 200 lbs
<b>CHEST</b>	31" - 33"	33" - 35"	35" - 37"	37" - 39"	39" - 41"	41" - 43"
<b>WAIST</b>	24" - 26"	26" - 28"	28" - 30"	30" - 32"	32" - 34"	34" - 36"
<b>HIP</b>	34" - 36"	36" - 38"	38" - 40"	40" - 42"	42" - 44"	44" - 46"
<b>INSEAM</b>	28" - 29"	29" - 30"	30" - 31"	31" - 32"	32" - 33"	33" - 35"

